

# New Zealand Green Building Council (NZGBC) Floor Fit-out: Small Building System Installation

Schneider Electric had the opportunity to install their Small Building System into the latest NZGBC floor fit-out, to help them assist in achieving a NABERSNZ rating. The Small Building System offers HVAC Management, Lighting Control and Energy Monitoring, with its web-based integrated software – StruxureWare Building Expert. It also offers multi-protocol communication, for seamless integration to various types of control and field devices.

## • System

- Open and scalable system (StruxureWare™ Building Expert, BACnet, EWS, oBIX, FTP)

## • Management

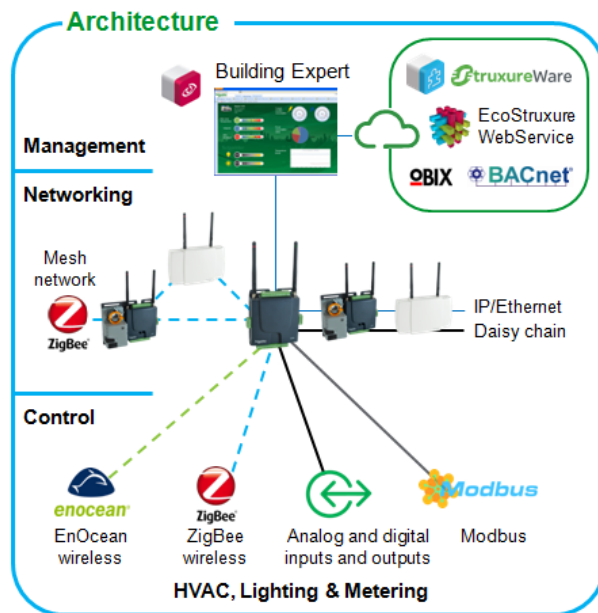
- Building Expert
- Fully programmable (graphical programming and scripting)

## • Networking

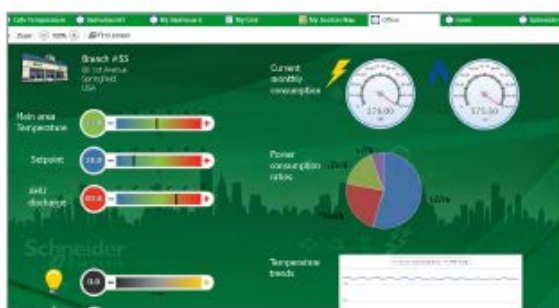
- Wireless mesh: ZigBee
- Daisy chain: CANbus
- IP/Ethernet

## • Control

- Wireless: EnOcean, ZigBee
- Wired: I/O, Modbus



With the scalability of the system, the initial outcome will largely be Energy Monitoring, through the use of Schneider Electric's kWh check metering and integration over Modbus communication. The data collected from the meters will be displayed on the Dashboard, giving view to real-time & historical data. The system is also able to display section maps, highlighting quickly any areas of concern in the building.



A basic lighting control strategy will also be implemented with the system, by integrating the existing motion detection sensors. This will assist with better energy management of the office lighting, through on-going monitoring & load profiling of the lighting circuits.

The Small Building System will be installed and commissioned by one of Schneider Electric's System Integrator partners – Akon Electrical Solutions.